



BZ-2RW822T



Actual product appearance may vary.

BZ Series Standard Basic Switch, Single Pole Double Throw Circuitry, 15 A at 250 Vac, Roller Lever Actuator, 1,67 N [6 oz] Maximum Operating Force, Silver Contacts, Screw Termination, CE, CSA, DEMKO, UL

Features

- Accepted world-wide standard "Large Basic" switch
- Low operating force and differential travel
- Long mechanical life up to 20,000,000 cycles at 95% survival
- Elongated mounting hole for easier, more accurate mounting
- Current rating ranges from 15 A to 25 A
- Choice of actuation, termination and operating characteristics

Potential Applications

- Irrigation systems
- Semi-trailer trucks
- Timing devices
- Office equipment
- Test instruments
- Medical/dental equipment
- HVAC equipment
- Manually operated devices
- Valves

Description

MICRO SWITCH™ BZ/BA Series standard basic switches are used for simple or precision on/off application needs.

Product Specifications	
Switch Type	MICRO SWITCH™ Standard 25,4 mm H x 17,8 mm W x 50,8 mm L [1.0 in H x 0.7 in W x 2.0 in L]
Sealed	No
Ampere Rating	15 A
Circuitry	Single Pole Double Throw (SPDT)
Actuator	Roller Lever
Termination	Screw
Operating Temperature Range	-55 °C to 85 °C [-67 °F to 185 °F]
Voltage	250 Vac

Approvals	CE,CSA,UL
Actuator Length	26,06 mm [1.026 in]
Contact Type	Silver
Operating Force (O.F.)	1,67 N [6.0 oz] max.
Release Force (R.F.)	0,42 N [1.5 oz] min.
Overtravel (O.T.)	2,39 mm [0.094 in] min.
Differential Travel (D.T.)	0,08 mm - 0,51 mm [0.003 in - 0.020 in]
Operating Position (O.P.)	30,17 mm \pm 0,38 mm [1.188 in \pm 0.015 in]
Free Position (F.P.)	32,54 mm [1.281 in] max.
Material	Plastic
Housing Material	General Purpose Phenolic
High Temperature	204 °C [400 °F]
CE mark	61058-1
UL File #	E12252
CSA File #	LR41370
Agency Approvals and Standards	1054
Mounting Screw Size	3,53 mm [0.139 in]
Mounting Centers	25,4 mm [1 in]
Maximum Tightening Torque	0,33 N m [3.0 in lb]
Weight	34,5 g [0.076 lb]
Package Height	24,1 mm [0.95 in]
Package Width	17,5 mm [0.69 in]
Package Length	49,3 mm [1.94 in]
Recommended For	26,7 mm [1.05 in] (steel roller) lever applications
Availability	Global
UNSPSC Code	30211905
UNSPSC Commodity	30211905 Snap switches
Series Name	BZ/BA/WA/YZ

MICRO SWITCH

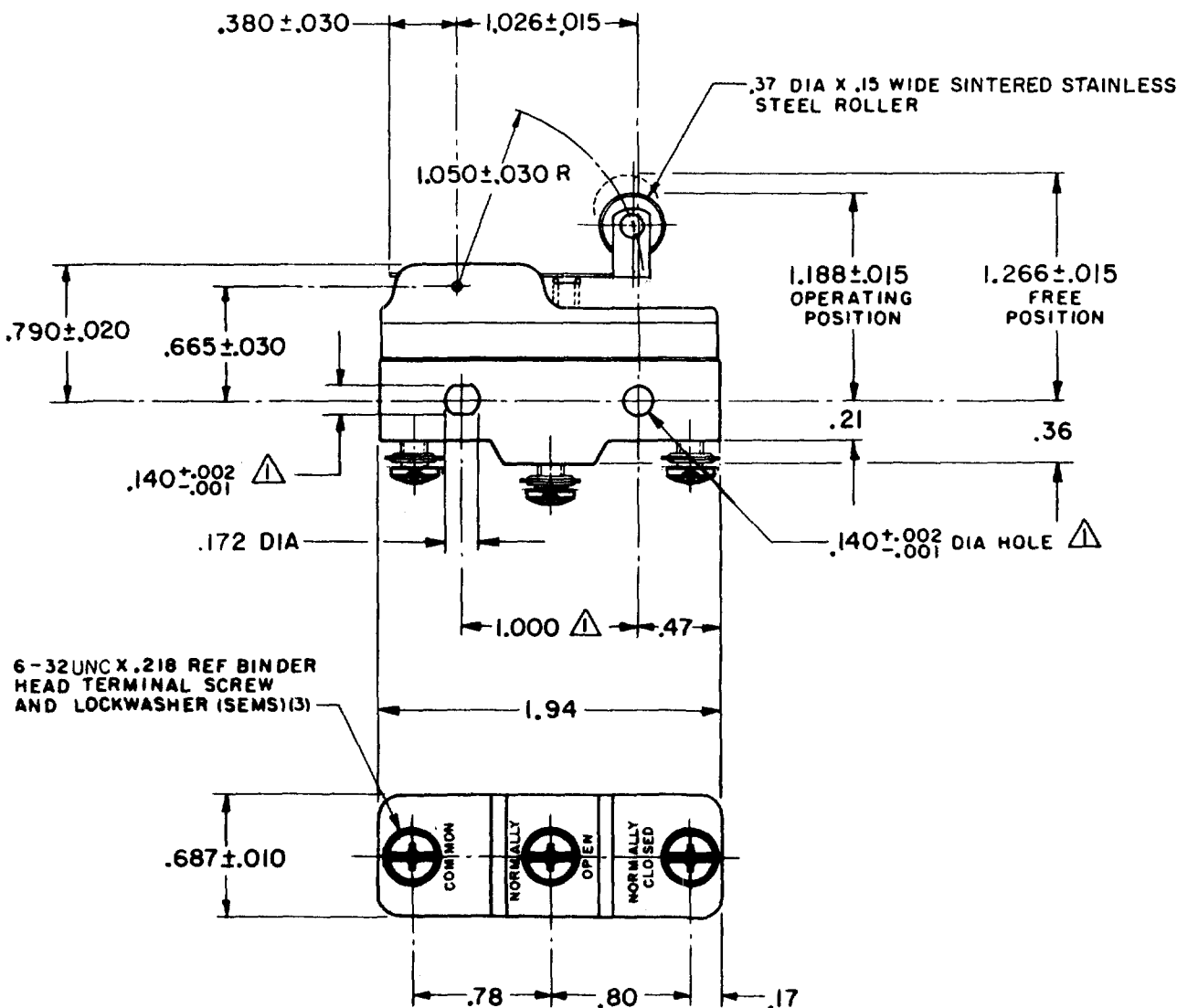
A DIVISION OF MINNEAPOLIS-HONEYWELL REGULATOR COMPANY
 MINNEAPOLIS, MINNESOTA
 FED. MFR. CODE 91929

SWITCH - BASIC

CATALOG LISTING
BZ-2RW822T

APF5000

BZ-2RW822T
 PAGE 1 OF 1
M
 DRAWING NUMBER
 ISSUE 13
 REVISIONS
 A CO 16736 10 APRIL 62
 B CO 34306 8 JUL 75
 C CO 52446 31 JAN 83
 D CO-189351-D 18 JUL 91
 E CO 70184-H 2 JUN 92
 F CO-75204B DAW 1 FEB 94
 G CO-77589 MAM 29 MAR 94
 H C093346 DLT 2 SEP 98
 J 0015139 TSG 23 AUG 05
 FORMTEK
 FO-50378
 DRAWN
 GCH 10 APRIL 62
 CHECK
 DAW
 CHECK
 RJ 23 AUG 05
 CHECK
 MAY 62
 CHECK
 REPLACES
 RELEASE NO.



NOTE
 △ - MOUNTING HOLES WILL ACCEPT PINS OR SCREWS OF .139 MAX DIA ON 1.000 ± .002 CENTERS

THIS DRAWING COVERS A PROPRIETARY ITEM AND IS THE PROPERTY OF MICRO SWITCH, A DIVISION OF MINNEAPOLIS-HONEYWELL REGULATOR CO. THIS DRAWING IS NOT TO BE COPIED OR USED WITHOUT THE APPROVAL OF MICRO SWITCH.

CHARACTERISTICS	ELECTRICAL DATA	SCALE FULL
OPERATING FORCE ----- 6 OZ MAX	CONTACT ARRANGEMENT S P D T	DO NOT SCALE PRINT
RELEASE FORCE ----- 1 1/2 OZ MIN	- L74 - 15A-125, 250, OR 480 VAC; 2A-600 VAC 1/2 A-125 VDC; 1/4 A-250 VDC 1/8 HP-125 VAC; 1/4 HP-250 VAC	UNLESS OTHERWISE SPECIFIED DIMENSIONS ARE IN INCHES
DIFFERENTIAL TRAVEL ----- .003 - .020	-L288- -L306- -L315-	TOLERANCES ARE: ONE PLACE (.0) ± .030 TWO PLACE (.00) ± .015 THREE PLACE (.000) ± .005 ANGLES ±
OVERTRAVEL ----- .094 MIN	CE EN 05 EC 16A 250V ~ T85 5E4	WEIGHT .076 LB